

NISO
How the information world CONNECTS

An Update of NISO's Activities

Todd Carpenter
Managing Director, NISO
SLA Annual Conference 2009

Advice on giving presentations

(Maybe 2)

June 16, 2009 SLA Annual Conference 1

What will we cover today

- A bit about NISO, scope, engagement, changes
- Report on a few ongoing work projects
 - SUSHI, SERU, I², ERMI, KBART
- ISO Ongoing Work
 - ISTC, ISNI, DOI, Thesaurus Work, Records Management
- New/Potential Work Items
 - Metadata Exchange, Research Data, Online Journal Representation, NLM Digital Tag Suite

June 16, 2009 SLA Annual Conference 2

National Information Standards Organization

- Non-profit industry association accredited by ANSI
- Mission of developing and maintaining technical standards related to information, documentation, discovery and distribution of published materials and media
- Represent US interests in information and documentation to the International Organization of Standardization (ISO)
- Staff: 4 professional full-time
- Volunteers: 300+ spread out across the world

June 16, 2009 SLA Annual Conference 3

Map of Community

June 16, 2009 SLA Annual Conference 4

Reorganized NISO

June 16, 2009 SLA Annual Conference 5

Updates on Specific work projects

- E-Resource Management issue (ONIX-PL, ERMI revision)
- SUSHI
- Institutional Identification
- Knowledge Bases & Related Tools
- Single Sign-on Authentication

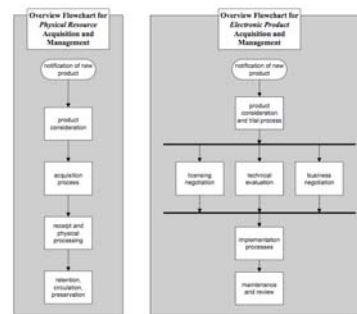


June 16, 2009

SLA Annual Conference

6

DLF ERMI Workflows



Differences between print and electronic workflow

As described in initial ERMI report

Source:
<http://www.diglib.org/pubs/dli102/dfermi0408apub.pdf>



June 16, 2009

SLA Annual Conference

7

E-Resources Management Initiative (ERMI)

Areas for exploration and development recommended in ERMI reports:

- Management systems (Now ERMs)
- Management of usage data (SUSHI)
- Define license terminology (ERMI data dictionary)
- Training community on how to encode license
- Exchange of terms (LEWG - ONIX-PL)
- ~~Cost-per-use calculation data (CORE)~~

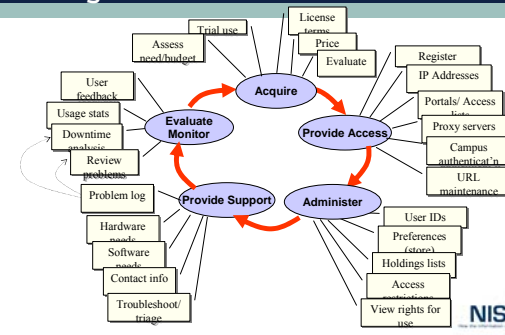


June 16, 2009

SLA Annual Conference

8

Workflow of E-Resource Management



June 16, 2009

SLA Annual Conference

9

Briefly: SUSHI

- Need: Simplify and automate the gathering of usage data for librarians
 - Librarians spending more time gathering data than analyzing it
- Solution
 - Server/Client system to exchange COUNTER reports
 - Easily incorporated into usage systems (on publisher side) or into ERM (on library side)
 - Client calls to server, asks for report, and server runs the report and sends it on
 - Data exchange is taking place by machine talking with machine



June 16, 2009

SLA Annual Conference

10

Briefly: SUSHI

Standardized Usage Statistics Harvesting Initiative (SUSHI)
 Protocol - ANSI/NISO Z39.93-2007

SUSHI released for trial use after 14 months, published after 27 months

Incorporated into release 3 of COUNTER Code of Practice

As of August 31, 2009 in order to be COUNTER compliant, publishers must be SUSHI compliant



June 16, 2009

SLA Annual Conference

11

Briefly: ONIX-PL

- A structure for making the content of a license machine-readable
- An XML format
- A tool to make license terms and conditions more accessible
- Extensible so additional terms can be added to dictionary in the future



June 16, 2009

SLA Annual Conference

12

What ONIX-PL is not

- *ONIX-PL is not* a Rights Expression Language
- It is not designed to prevent/enable access to a piece of digital content
- While it can express the content of a license, it is not a license
- A complete ONIX-PL record isn't required
- OPEN to interpretation



June 16, 2009

SLA Annual Conference

13

Where does ONIX-PL stand?

Available and ready to use

- ONIX-PL format specification v1.0
 - Schema released in November of 2008
- ONIX-PL Dictionary Issue 1
- OPLE Editing tools launched
- Guidelines for ONIX-PL applications



June 16, 2009

SLA Annual Conference

14

Briefly: SERU

- Need: Reduce the transaction costs of negotiating licenses, particularly for smaller products
- Solution
 - Framework for community-held best practices regarding delivery and management of electronic content
 - Based on a decade of growing mutual trust and experience with digital information
 - Broad consensus on issues such as authorized users, third-party archiving, improper use, systematic downloading, etc.
 - Not another model license, nor a click-through or wrap



June 16, 2009

SLA Annual Conference

15

Briefly: SERU

NISO RP-7-2008, SERU: A Shared Electronic Resource Understanding published in Feb 2008

Gaining momentum - Planning a survey or its use and people's experiences

Discussions of developing an international version

Registry of users on NISO website

- 33 publishers & content providers
- 86 libraries
- 8 consoritia

<http://www.niso.org/workrooms/seru>



June 16, 2009

SLA Annual Conference

16

Briefly: Institutional Identification

The need for a new identifier?

- Limitations of current identifiers
- Broader inclusion - not just libraries, bookstores, institutions
- Functionality / action-ability
- Expansion of metadata

Working group exploring use cases and metadata needs

Authentication, IP registration, contact management, sales support for publishers



June 16, 2009

SLA Annual Conference

17

Briefly: Gaps in Institutional ID

Identifier information use	DUNS	SAN	ISIL	MARC	DOI	Proposed Inst ID
Institutional name	X	X	X	X	X	X
Institutional identifier number	X	X	X	X	X	X
Can be mapped to Other identifiers						X
Externally defined Institutional type/N classes, categories, groups	X			P		X
Delivery addresses	P	X	P		P	X
URL					P [can link to a url]	X
Institutional sizing metrics	P					X
Externally defined Institutional categories/N Carnegie, JISC						X
Variant names	P	P	X	X	P	X
Authentication			P		P	P
Institutional contacts	P	P	P			P*

Source: "Institutional identifiers in the journal supply chain: a summary of why existing identifiers don't measure up". Don Chvatal, Helen Henderson, Ralph Shoffner.



June 16, 2009

SLA Annual Conference

18

Briefly: KBART

Framework for Knowledge Base Exchange

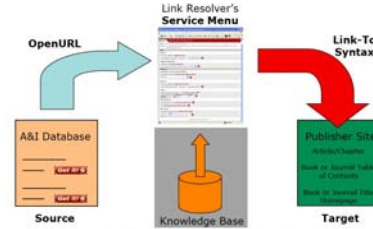


FIGURE 1: Overview of the OpenURL Linking Framework



June 16, 2009

SLA Annual Conference

19

Briefly: KBART

Knowledge Bases and Related Tools Project

Joint NISO/UKSG project launched in 2008

Three core problems

- Inaccurate data leads to bad links
- Incorrect implementation
- Lack of knowledge

- Recommendations on data requirements, transfer formats & protocols, error reporting, education



June 16, 2009

SLA Annual Conference

20

Squeaky Wheel



June 16, 2009

SLA Annual Conference

21

ISO Responsibilities

NISO represents US interest to ISO in the areas of Information & Documentation (all of TC 46)

ONLY US-BASED NISO MEMBERS can submit official US comments on ISO drafts of developing standards

All areas of library/publisher/vendor issues:

- RFID, ILL, Country Language Codes
- ISBN, ISSN, DOI, ISRC, ISMN, ISNI



June 16, 2009

SLA Annual Conference

22

NEW ISO Responsibilities

- In February 2008, NISO assumed the responsibilities as Secretariat TC 46 SC 9 on behalf of ANSI

- Partnership with Korea (KATS)
 - Professor Sam Oh (Sungkyunkwan University) as Chairman

- Responsibilities
 - Organizing meetings
 - Coordinating working group workflow & timelines
 - Monitoring balloting
 - Coordinating final editorial review



June 16, 2009

SLA Annual Conference

23

Big Picture

International Standard Serial Number

ISSN

ISBN

NISO

June 16, 2009 SLA Annual Conference 24

Big Picture

International Standard Serial Number

ISSN

ISBN

NISO

June 16, 2009 SLA Annual Conference 25

Big Picture

International Standard Text Code

Consortium between:

- » CISAC
- » Nielsen
- » Bowker
- » IFRRO

Starts operations in Q1 2009

ISSN

ISTC

ISBN

NISO

June 16, 2009 SLA Annual Conference 26

Big Picture

International Standard Record Code

- >> identifies "records"
- >> approx. 12 MM ISRCs
- >> no central database

ISSN

ISTC

ISBN

ISRC

NISO

June 16, 2009 SLA Annual Conference 27

Big Picture

International Standard Music Work Code

- » Identification of intangible musical creations
- » Central Database: CSI
- » 18 Millions ISWC assigned
- » CISAC is the International Agency

ISSN

ISTC

ISBN

CSI

ISWC

ISRC

NISO

June 16, 2009 SLA Annual Conference 28

Big Picture

International Standard Music Number

- Identifies printed music scores
- New standard hearing publication (final)

ISSN

ISTC

ISBN

CSI

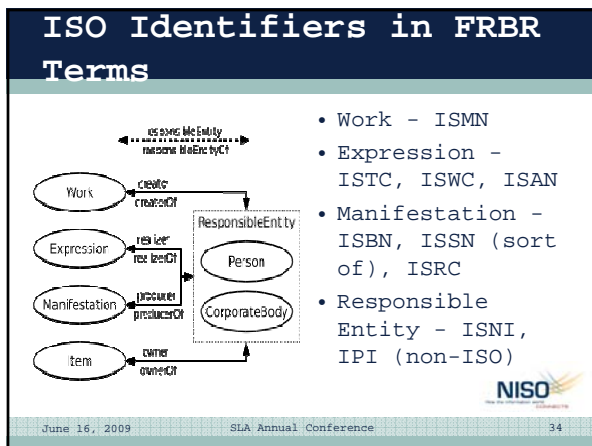
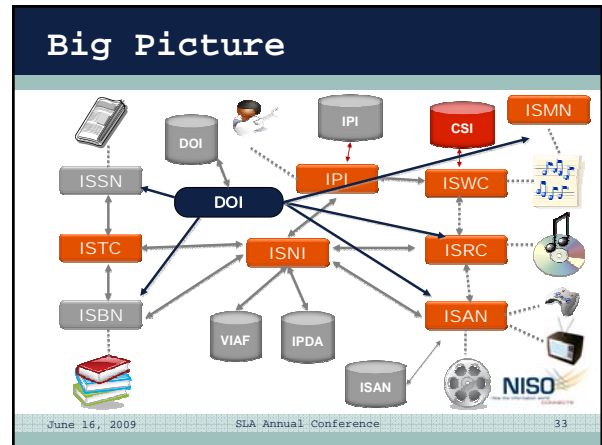
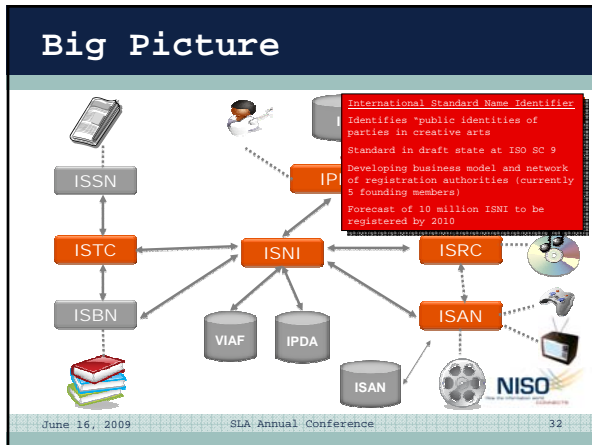
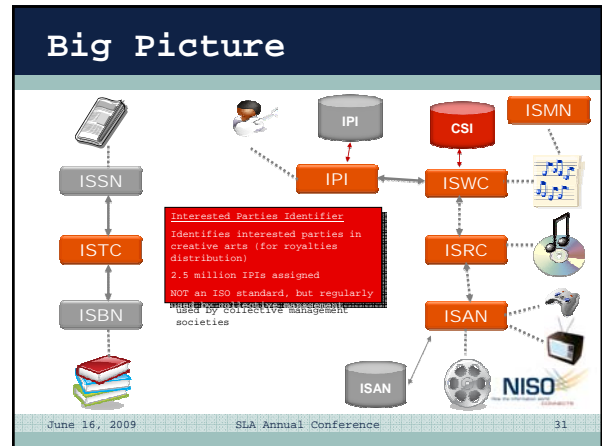
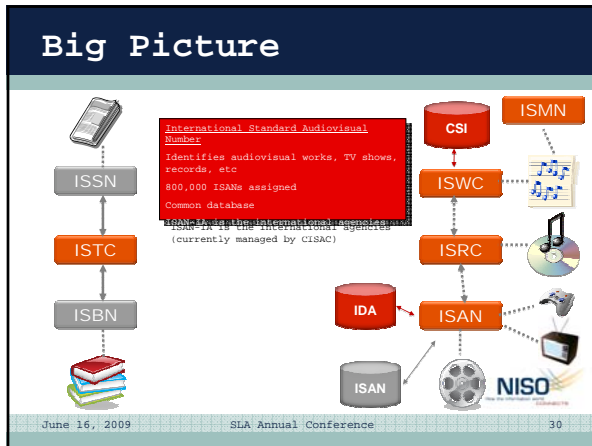
ISWC

ISRC

ISMN

NISO

June 16, 2009 SLA Annual Conference 29



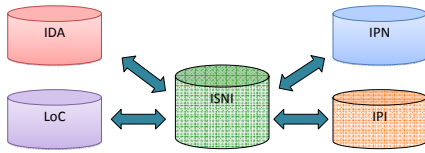
ISNI scope

identification of **Public Identities** of parties the identities used publicly by parties involved throughout the media content industries in the creation, production, management, and content distribution chains

uniquely identifies public identities across multiple fields of creative activity.

June 16, 2009 SLA Annual Conference 35

How the ISNI system will work



ISNI	1442 3847 9578 3204
Name	Madonna
Date / Place	Born Aug. 16th 1958 in Bay City, Mi
URIs	http://link.ipi.net/q?isni=1442384795783204 http://isni.ida.net/q?isni=1442384795783204



June 16, 2009

SLA Annual Conference

36

New Areas of Development Work

- Improving metadata exchange
- Research data, potential projects in citation, identification and discovery
- Physical Delivery
- Online journal representation
- XML file format structures

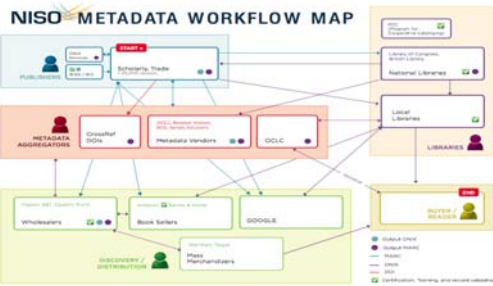


June 16, 2009

SLA Annual Conference

37

Workflow of Metadata Exchange

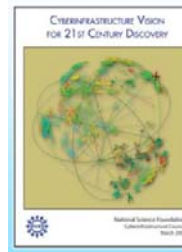


June 16, 2009

SLA Annual Conference

38

Data Opportunities



- "Science and engineering digital data are routinely deposited in a well-documented form, are regularly and easily consulted and analyzed by specialists and non-specialists alike, are openly accessible while suitably protected, and are reliably preserved."
- NSF Cyberinfrastructure Vision for 21st Century Discovery, Chapter 3



June 16, 2009

SLA Annual Conference

39

TL Meeting Recommendations

Undertake a review and promote adoption of best practices on storage, preservation, reuse of scholarly data

Create and promote a citation standard for data

Develop metadata standards for data sets

Potentially create an identifier and registry that applies metadata schema

FINAL REPORT TO MELLON - Outreaching

partners



June 16, 2009

SLA Annual Conference

40

Physical Delivery

Proposal to develop a statement of standard practices related to the delivery of library materials

Issues & standard practices might include:

Glossary

- Packaging Shipping codes
- Labeling Turn-around time
- Lost/damaged materials Package tracking
- Ergonomic considerations Statistics



June 16, 2009

SLA Annual Conference

41

Online Journal Representation

Significant problems with title changes and journals representation online

Historical titles/merged titles are often not discoverable - past content is under current title

Title changes & publisher changes can impact DOI, linking and referencing

Group exploring issues and NFAIS report on article-by-article publishing

Hope to submit proposal this summer



June 16, 2009

SLA Annual Conference

42

XML File Structures

Received a proposal from the NLM to standardize the NLM DTD tag suite and archive & article formats
CCM currently reviewing proposal

Alignment with revision of NISO/DAISY standard for Digital Talking Books

Also working on coordination with IDPF and EPUB standard



June 16, 2009

SLA Annual Conference

43

One last thing...

"Making the simple complicated is commonplace; making the complicated simple, awesomely simple, that's creativity."
Charles Mingus



Image from Will Lion: <http://www.flickr.com/photos/will-lion/2646213692/>



June 16, 2009

SLA Annual Conference

44

Thank you!

Todd Carpenter, Managing Director
tcarpenter@niso.org

National Information Standards Organization
One North Charles Street
Suite 1905
Baltimore, MD 21201 USA
+1 (301) 654-2512
Fax: +1 (410) 685-5278
www.niso.org



June 16, 2009

SLA Annual Conference

45